

LOST RC MODEL “HEXACOPTER”

On Wednesday, August 8th 2012 between 12:30 PM and 1:00 PM I was flying my radio controlled model “Hexacopter” shooting some aerial video in Rogue River. I took off from the football field and approximately 3 minutes into the flight I lost visual of the model in flight.

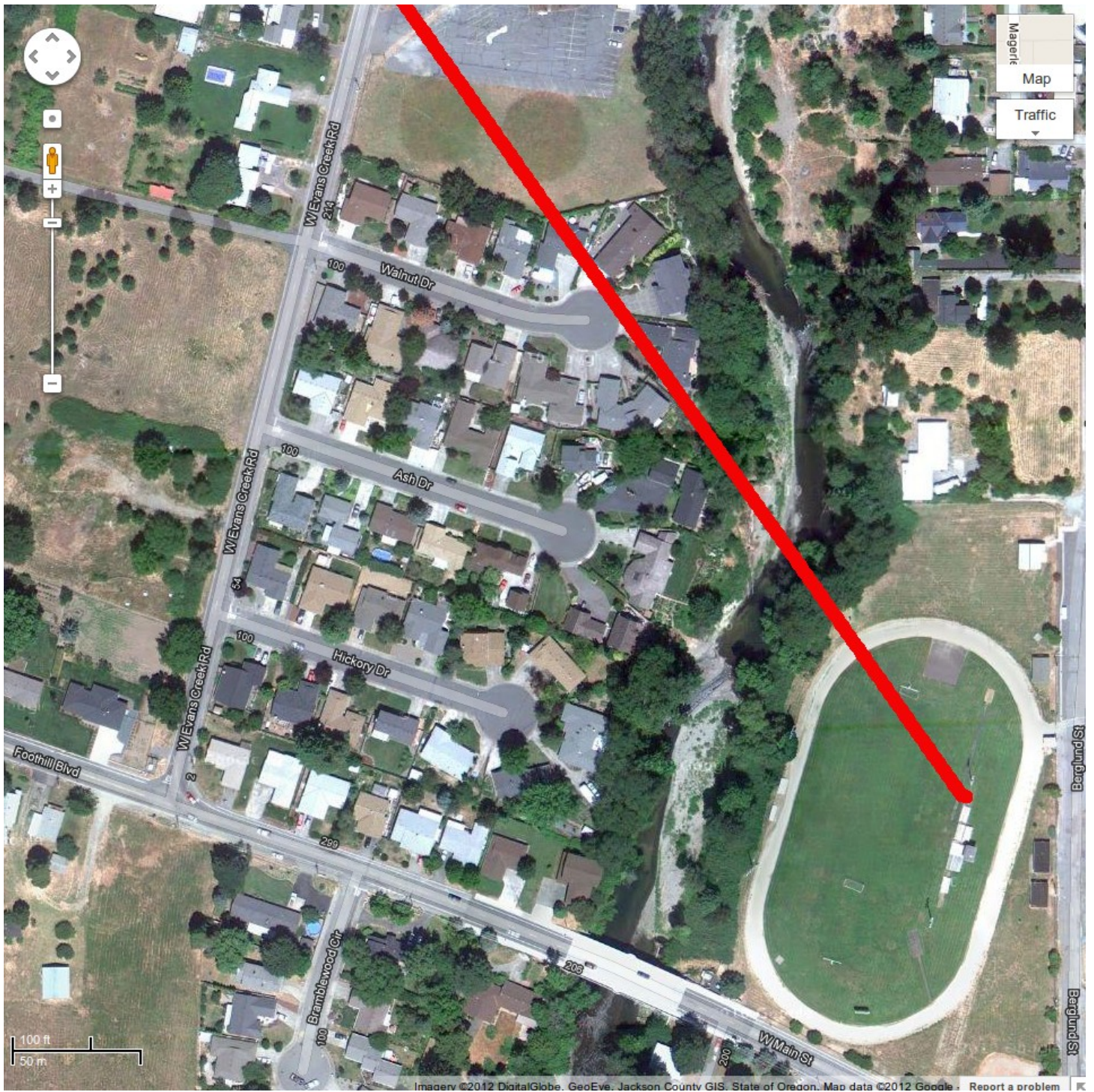
The model looks like this:



The model has six arms each with a motor and propeller. The red bowl on the bottom is a “Tupperware” like food storage container. Inside is a small video camera and a mobile phone. The mobile phone was tracking GPS coordinates of the flight path.

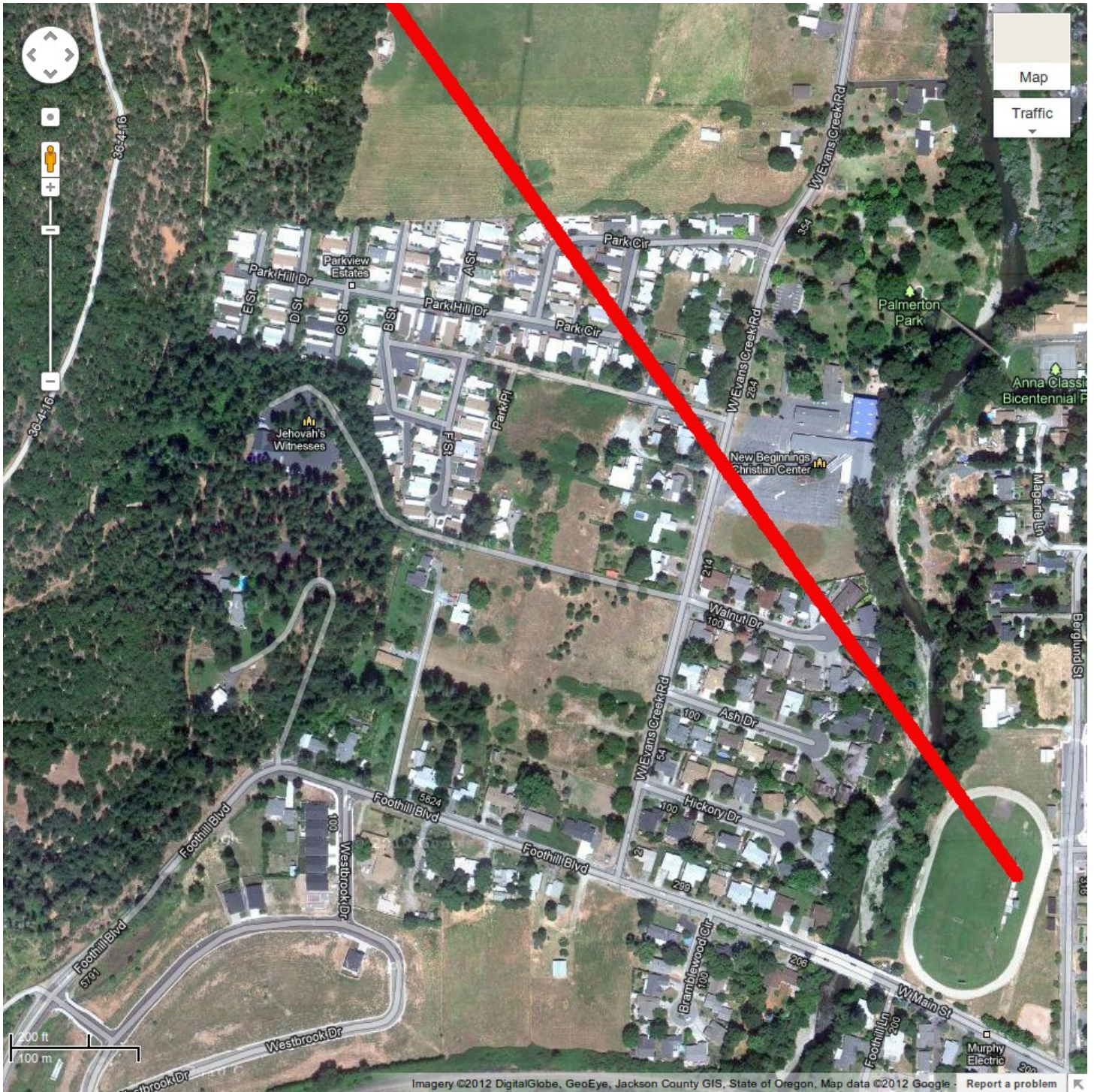
The video camera looks like this:	The mobile phone looks like this:
	

These images indicate the approximate flight line when the model was lost:



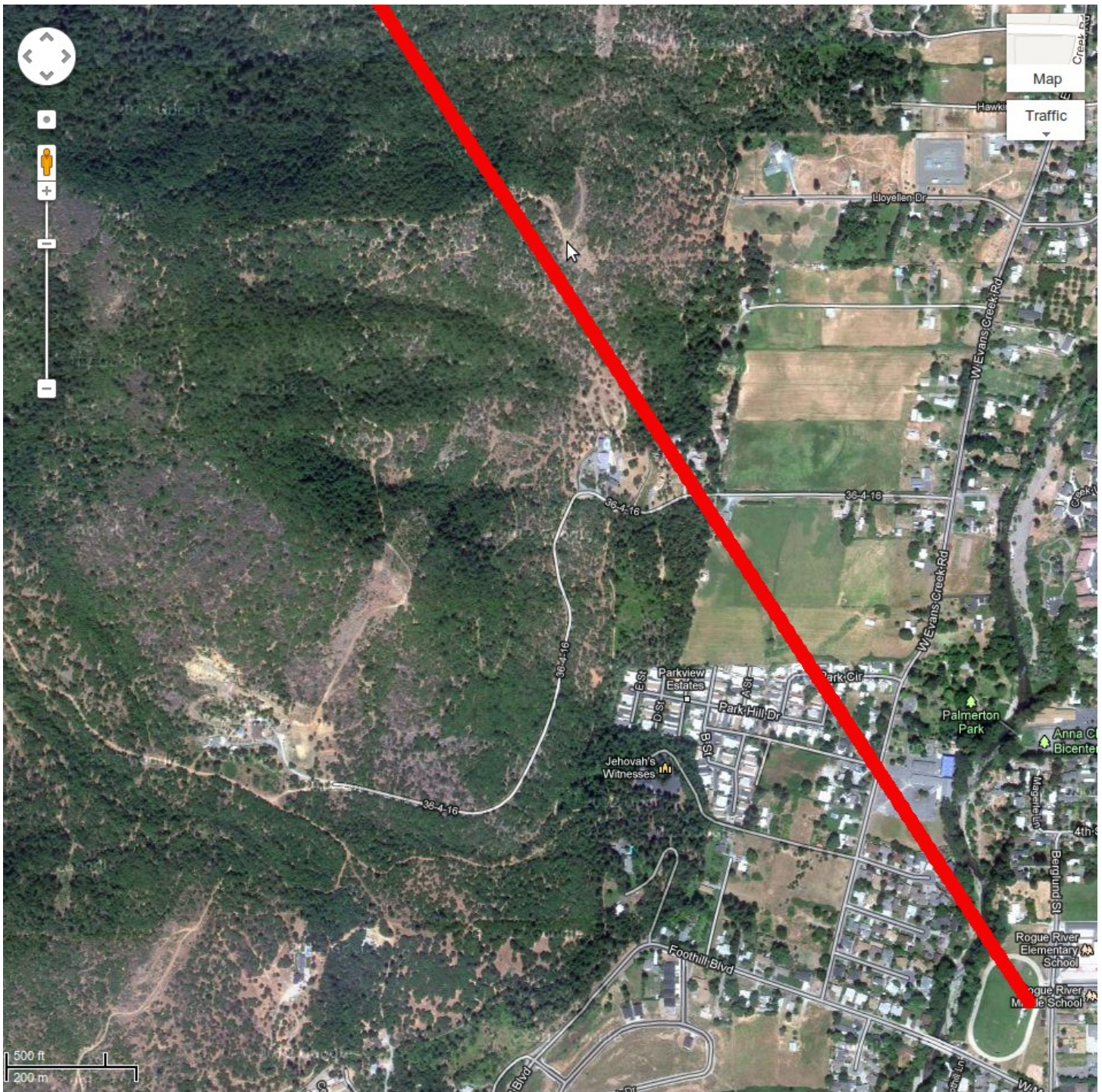
Flight line scale 1

Continued on page 3



Flight line scale 2

Continued page 4



Flight line scale 3

It is possible that the model lost control signal or was blown off course by wind so it is possible that it could have deviated from the flight lines shown above by a considerable margin.

I would also like to point out that it is most likely that the model did not simply drop from the sky. It is battery powered and has a safety built-in that when the battery power reaches a certain level the model will automatically lower itself back to the ground.

I cannot be reached by phone until I get a replacement, however I have setup a email address for any information regarding the lost model. Please email me at: lostmodel@west-age.com

Any information is appreciated.